



Compliance Team
EMS
843-228-3102

Air Quality
Asbestos/Toxics
843-228-3400

Hazardous Waste
843-228-4698

Stormwater
Water Quality
843-228-4293

Tank Program/Training
843-228-2611

Natural Resources
Manager
843-228-3066

Conservation Law
Enforcement
843-228-3799

Wildlife Biologist
843-228-2663

Recycle Manager
843-228-3430

Env. Restoration
843-228-3615

Stormwater

What is stormwater?

Stormwater is rain that soaks into the ground or flows across impervious surfaces (roofs/pavement). Some of the water gets taken up by plants or absorbs into ground water, but a majority will runoff into our waters. The stormwater from Parris Island discharges into the Beaufort and Broad Rivers. It is also the most common cause of water pollution in our rivers.



Why does water quality matter?

The leading cause of poor water quality in South Carolina is stormwater runoff. Parris Island is surrounded by critical marsh ecosystems that are essential to maintaining healthy water quality, protecting our shores from flooding/erosion, and providing habitat for local fisheries.



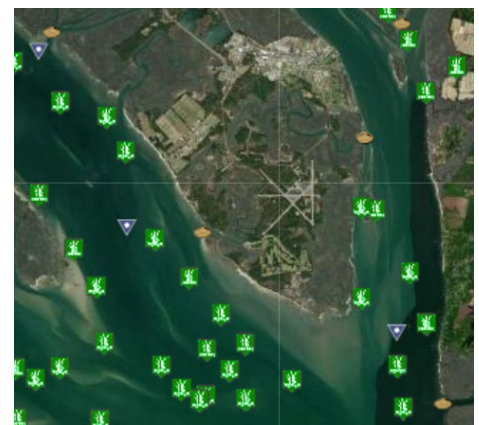
Images: Calvert Marine Museum

How you can help?

- Ensure **ONLY** stormwater enters the storm drain
- Keep ditches, grates, and inlets clear of trash and debris
- Ensure materials, chemicals and waste are properly secured and stored
- If you have questions or need support, contact our Stormwater Section at 843-228-4293

Typical pollutants in Stormwater:

- Sediment
- Trash
- Oil and grease
- Bacteria (pet waste, sewer overflows, failing septic)
- Nutrients/fertilizers
- Pesticides/herbicides
- Soaps/solvents



DHEC Sampling Locations