



**Compliance Team**  
**EMS**  
**843-228-3102**

Air Quality  
Asbestos/Toxics  
843-228-3102

Hazardous Waste  
843-228-4698

**Stormwater**  
**Water Quality**  
**843-228-4293**

Tank Program/Training  
843-228-2611

**Natural Resources**  
**Manager**  
843-228-3066

Conservation Law  
Enforcement  
843-228-3799

Wildlife Biologist  
843-228-2663

**Recycle Manager**  
843-228-3430

**Env. Restoration**  
843-228-3615

## Stormwater

### *What is stormwater?*

Stormwater is rain that soaks into the ground or flows across impervious surfaces (roofs/pavement). Some of the water gets taken up by plants or absorbs into ground water, but a majority will runoff into our waters. The stormwater from Parris Island discharges into the Beaufort and Broad Rivers. It is also the most common cause of water pollution in our rivers.



### *Why does water quality matter?*

The leading cause of poor water quality in South Carolina is stormwater runoff. Parris Island is surrounded by critical marsh ecosystems that are essential to maintaining healthy water quality, protecting our shores from flooding/erosion, and providing habitat for local fisheries.



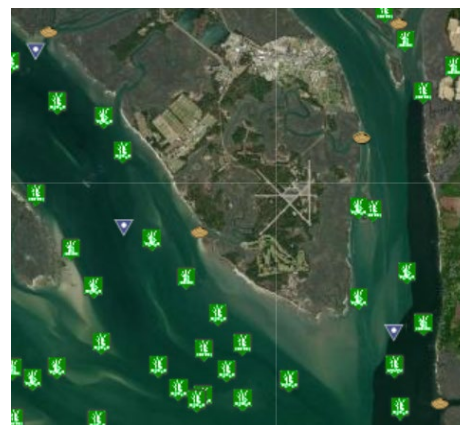
Images: Calvert Marine Museum

### How you can help?

- Ensure **ONLY** stormwater enters the storm drain
- Keep ditches, grates, and inlets clear of trash and debris
- Ensure materials, chemicals and waste are properly secured and stored
- If you have questions or need support, contact our Stormwater Section at 843-228-4293

### *Typical pollutants in Stormwater:*

- Sediment
- Trash
- Oil and grease
- Bacteria (pet waste, sewer overflows, failing septic)
- Nutrients/fertilizers
- Pesticides/herbicides
- Soaps/solvents



**DHEC Sampling Locations**