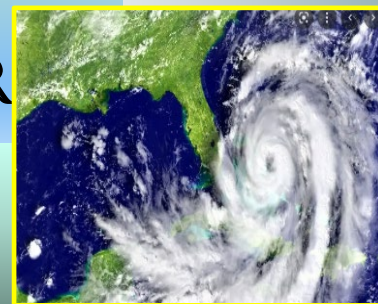


# PARRIS ISLAND

## ENVIRONMENTAL NEWSLETTER

Issue:

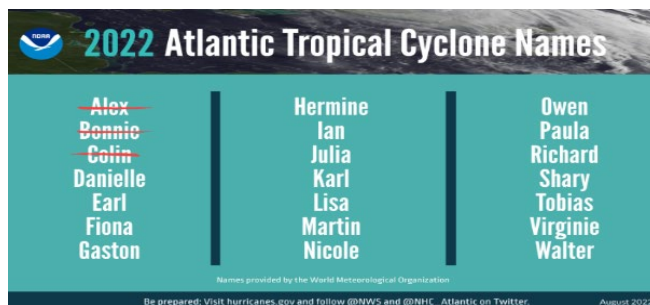
September 2022



### Hurricane Season



*The 2022 mid-season update is still expecting **above-normal** activity according to forecasters at NOAA's Climate Prediction Center: anticipated range is 3-5 major hurricanes.*



As we are now in peak hurricane season (August - October), we must be proactive to help minimize effects from potential storms. Managing stormwater effectively can help to minimize the damage caused by large volumes of rain. Stormwater systems are a network of swales, structures, and pipes that carry stormwater to retention ponds and outfalls. Because these systems are responsible for draining runoff from buildings and paved surfaces, it is vital to keep these structures in good repair and to prevent them from being clogged with debris or sediment.



#### Compliance Team

EMS

843-228-3102

Air Quality  
Asbestos/Toxics  
843-228-3102

Hazardous Waste  
843-228-4698

Stormwater  
Water Quality  
843-228-4293

Tank Program/Training  
843-228-2611

Natural Resources Manager  
843-228-3066

Conservation Law Enforcement  
843-228-3799

Wildlife Biologist  
843-228-2663

Recycle Manager  
843-228-3430

Env. Restoration  
843-228-3615

Depot Archaeologist  
843-228-2834

### How you can help?

- Ensure **ONLY** stormwater enters the storm drain
- Keep swales, grates and inlets clear of trash and debris
- Ensure materials, chemicals and waste are properly secured and stored
- If you have questions or need support, please call us!



Additional Resources: National Hurricane Center: <https://www.nhc.noaa.gov/>  
SC Emergency Management Division: <https://www.scemd.org/>